

**Image Processing by Fabrimex Systems
Software - Engineering - Vision Systems**

Your Partner for Image Processing Projects

Are you looking to enhance your industrial image processing capabilities? At Fabrimex Systems, we specialize in providing top-notch consulting, engineering and project management services.

Need advanced hardware like smart cameras, vision systems, computing solutions, lighting or optics? Our experts have you covered. Ready to reduce defects and boost efficiency?



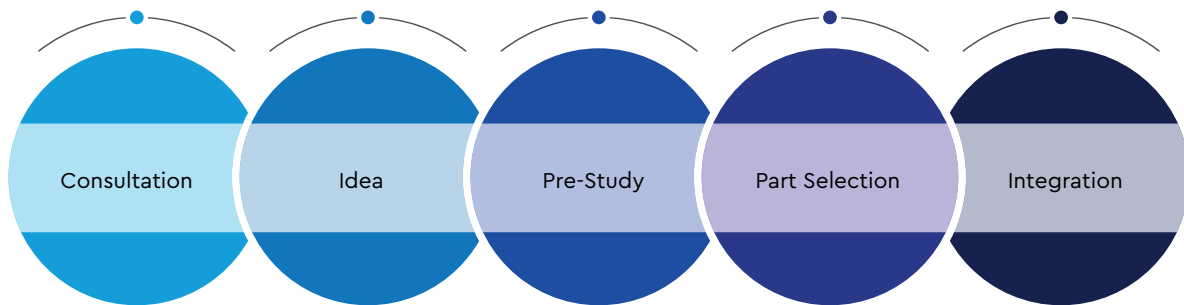
We also partner with highly specialized integrators across all industries to ensure seamless integration and optimal performance of our systems. Whether you are in automotive, pharmaceuticals or any other sector, our collaborative approach ensures you receive the best expertise and solutions tailored to your specific needs.

Contact us today to see how our tailored solutions can drive success in your operations.

Contact us: +41 44 908 13 60 – kontakt@fabrimex-systems.ch

Consulting – Engineering – Project Management

Partnership, customer proximity and expertise are values that Fabrimex Systems stands for. We discuss your applications and challenges with you and together find the optimal products. With a large network of integrators, we also support you in implementing your solutions.



We offer top-tier consulting, engineering and project management services, incorporating advanced hardware such as smart cameras, vision systems, computing solutions, precision lighting and high-quality optics.

Our team of experts leverages the latest technology to provide innovative, customized solutions tailored to your specific needs. We excel in creating robust image processing solutions, seamlessly integrating all necessary components to ensure high performance and efficiency.

With comprehensive project management, we handle every aspect of your project from planning to execution, ensuring timely and budget-friendly delivery. Our offerings include:

- Smart Cameras: Advanced algorithms for superior image quality and real-time processing.
- Vision Systems: Comprehensive solutions for quality control and automated inspection.
- Computing Solutions: High-performance computing for quick, accurate data analysis.
- Lighting: Customized lighting solutions for consistent, high-quality illumination.
- Cameras and Optics: A wide range of options for exceptional image resolution and detail or high speed applications – all the way with a wide product portfolio.

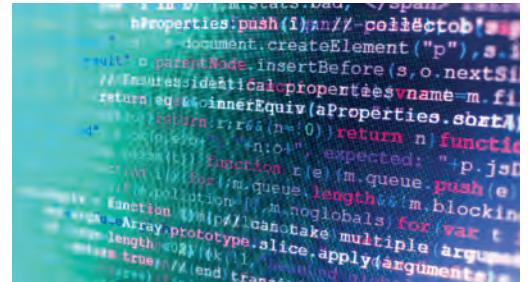
Partner up with Fabrimex Systems to experience expert consulting, innovative engineering and reliable project management in your industrial image processing projects. Contact us today to schedule a consultation and discover tailored solutions that drive success.

Ready to revolutionize your image processing capabilities? Reach out to Fabrimex Systems now.

Aurora Imaging Library

Powerful image processing library with an incredible number of methods that are continuously being developed.

Powerful features, cost-effective, single licensing.
Supported languages: C, C++, C#, and CPython
Supported OS: Linux, Windows.



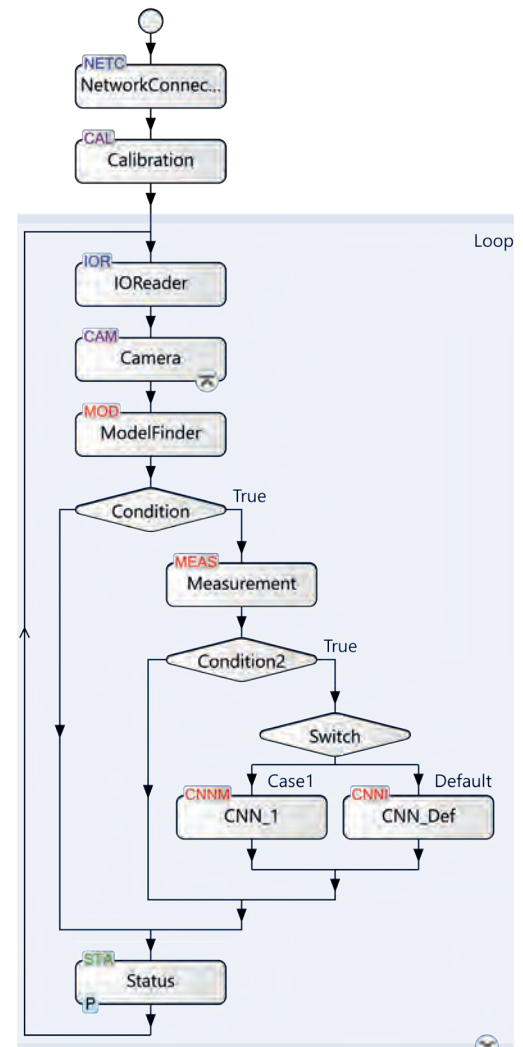
Aurora Design Assistant

Accelerate your development time with Design Assistant. Harness the power of the Zebra Imaging Library without writing a single line of code.

Flowchart-based programming gives you an advantage in the time-to-market of a software project. A huge selection of integrated modules is available. All variables of the underlying library are always accessible. Don't lose any flexibility, as you can create self-programmed modules if needed. A fully developed recipe management system allows you to handle all possible variations of parts. Want to change certain variables at runtime? No problem, a GUI builder integrated directly in the IDE with user management allows you to read, write and display all known variables at any time.

Product Benefits

- Reduces development time
- Fully equipped IDE
- Integrated GUI builder with user management
- Fully equipped recipe management
- Easily expandable with custom code
- Long-term support
- Abundant learning videos and example projects



Test it for free

Contact us: +41 44 908 13 60 – kontakt@fabrimex-systems.ch

Pro Vision Systems

With the already integrated vision system, you receive an individually configurable complete system consisting of hardware and software. You do not have to worry about compatibility or I/Os and can start development directly. Support for Zebra Design Assistant (IDE) and Zebra Imaging Library (SDK). Custom systems are also available.



GTX

Zebra GTX

- Dirty, humid or rough environments
- TCP/IP, CC-Link, EtherNet IP, Modbus, PROFINET, native robot interfaces
- Interface for motorized or liquid lense mount
- HMI over VGA and USB
- Real-time digital I/Os
- From 2 to 16 MP and up to 70 fps

4Sight EV7 | XV6

- 16 real-time digital I/Os with rotary encoder support
- RS-232/RS-485, Gigabit Ethernet, PoE, USB
- Mobile-class embedded twelfth-generation Intel Core processor
- Fanless design



EV7



High Performance & Custom Systems

- Rackmount, customized or fanless box PCs
- Special machine vision hardware available
- PoE, BNC, DIO, GigE, 10GigE and much more
- Panel PC with integrated connectors available
- Expandable systems with additional GPU

Start Easy – Zebra Smart Cameras

Easy to use, quick to integrate. From standard barcode reading for logistics to more complex image processing applications for special machinery. The cameras can be easily configured with the Zebra Aurora Focus development environment. The perfect go-to if you have standard image processing needs and want to keep development costs low.

VS Camera Family

The different models and separately selectable licenses offer you the flexibility and cost optimization you need. The smart cameras are suitable for beginners and experts. They are easy to maintain and troubleshoot, simply connect via USB-C or through the network with the camera's HMI. If you need additional or different lighting, you can power and control it directly from the camera.



VS40



VS70



VS20

Benefits of the VS

- Powerful OCR out of the box
- Short development time
- Web-based HMI or direct video connection via USB-C
- Liquid lens
- Intuitive configuration
- Integrated lighting
- Up to 9 I/Os
- TCP/IP, EtherNet/IP, Modbus, PROFINET, RS232
- From 2 to 5 MP and up to 60 fps
- IP67

Zebra Aurora Focus

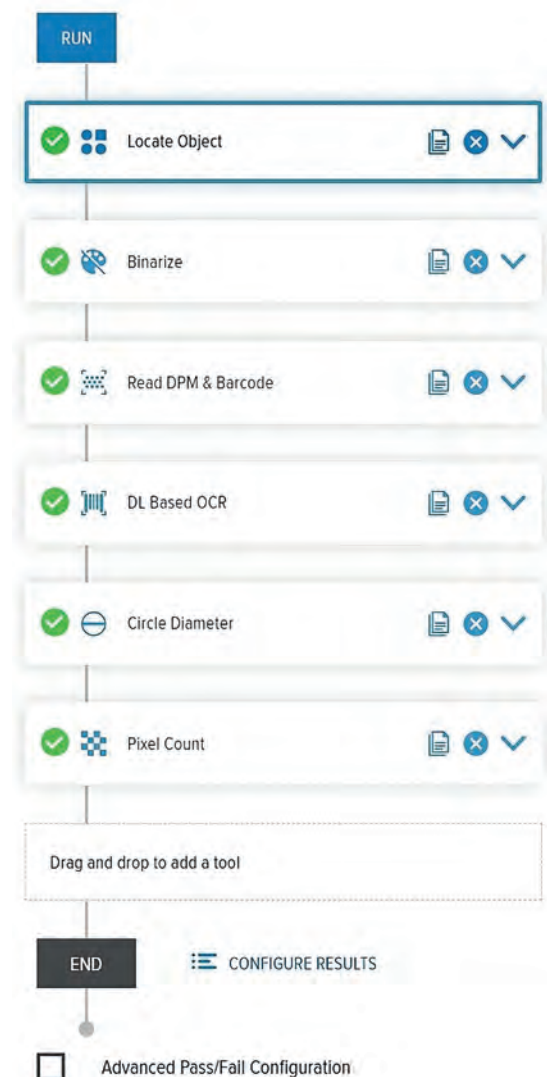
The Zebra Aurora Focus Software allows you to quickly and efficiently configure one-dimensional flow-chart-based program sequences. These can be executed on the VS camera family. With the intuitive development environment that even beginners can navigate, you can solve simple applications like standard barcode reading or more complex image processing tasks.

Product Benefits

- For beginners and professionals
- Intuitive configuration
- Wide range of image processing functions
- Fast development
- Easy integration with existing structures
- Web-based HMI for monitoring and recipe change
- TCP/IP, EtherNet/IP, Modbus, PROFINET, RS232

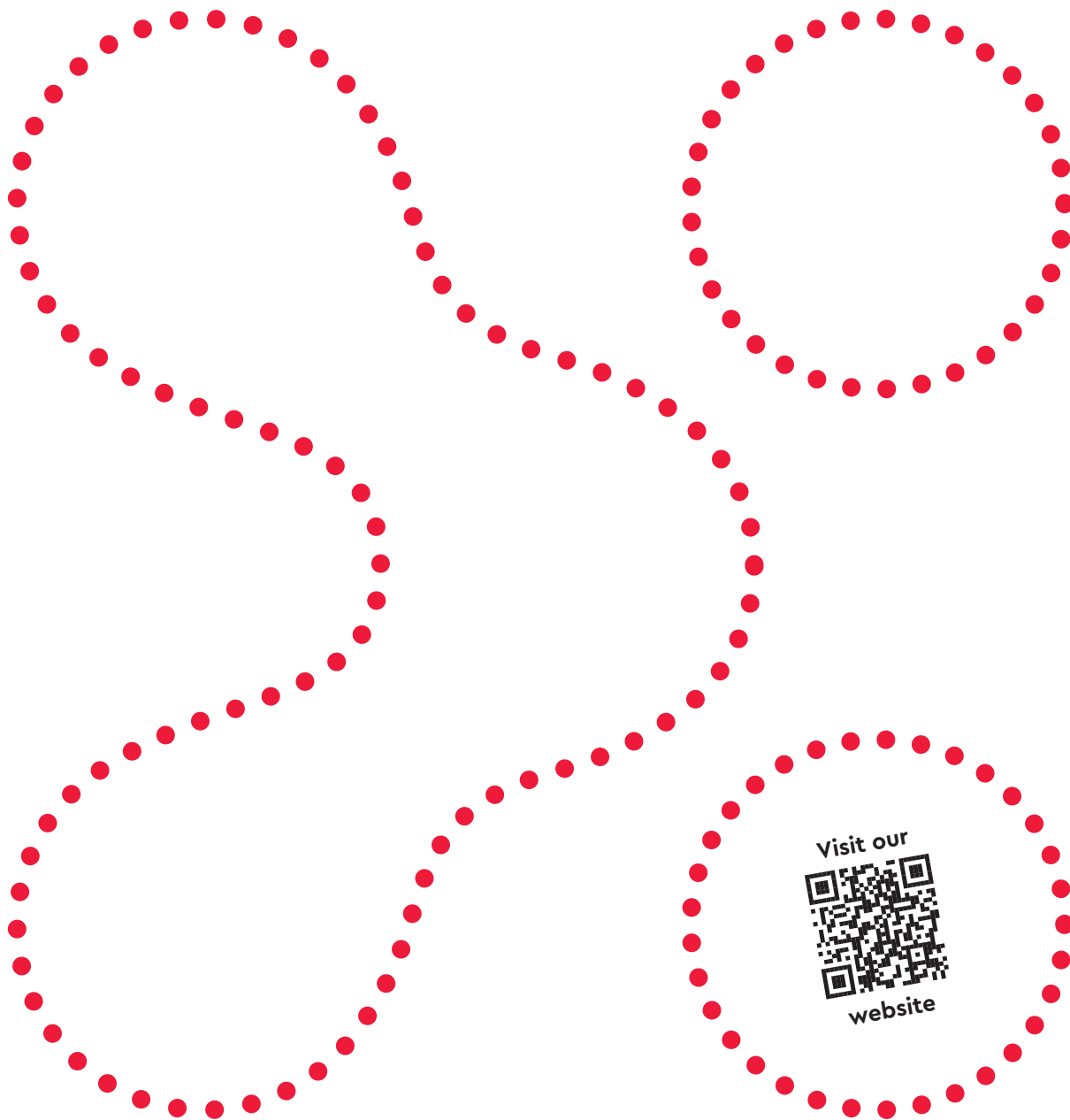
OCR

The unique OCR reads all common Latin fonts largely independent of lighting conditions or surfaces. Based on a huge neural network that delivers breathtaking results out-of-the-box, only the approximate font size needs to be provided to the tool. The tedious training of individual letters thus becomes a thing of the past.



Test it for free

Contact us: +41 44 908 13 60 – kontakt@fabrimex-systems.ch



Fabrimex Systems AG

Industriestrasse 4B

8604 Volketswil

Tel. +41 (0)44 908 13 60

www.fabrimex-systems.ch

kontakt@fabrimex-systems.ch