



Display Solutions
Aluminium Series by Fabrimex Systems

Display Solutions: Aluminium Series

Introducing our premium line of aluminium industrial touch monitors and panel PCs meticulously crafted in Switzerland for unrivalled quality and precision.

Designed specifically for industrial applications, our touch monitors are built to withstand the most demanding environments while delivering exceptional performance. The robust aluminium construction ensures durability and longevity, ensuring reliable operation even in harsh conditions and offering vast customization options.

With their advanced touch technology, our monitors provide intuitive and seamless interaction, allowing for precise control and effortless navigation. The high-resolution displays deliver crystal-clear visuals, ensuring optimal visibility of critical data and graphics.

We understand the importance of reliability in industrial settings, which is why our touch monitors undergo rigorous testing to meet stringent quality standards. You can trust our Swiss-made monitors to consistently deliver exceptional performance.

As a member of the HDBaseT Alliance we can fully embed the HDBaseT receiver into the monitors as well, so you will be able to connect your monitor to your PC through one RJ45 cable of up to 100 meters in length. Transmitted through a PCIe Card fitted into your existing systems or an external HDBaseT box, every installation can be upgraded.

Furthermore, our touch monitors are backed by a dedicated customer support team, ready to assist you with any inquiries or technical issues. We value our customers and strive to provide the highest level of service, ensuring your complete satisfaction.

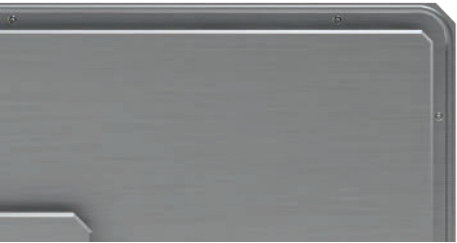
Experience the difference that our Swiss-made aluminium industrial touch monitors can make in your industrial operations. Elevate productivity, enhance efficiency and achieve superior results with our high-quality touch monitors. Contact us today to discuss your specific requirements and explore how our monitors and panel PCs can meet your industrial needs.

Contact our sales team today at +41 (0)44 908 13 60 or via email at kontakt@fabrimex-systems.ch to explore the possibilities for your needs.

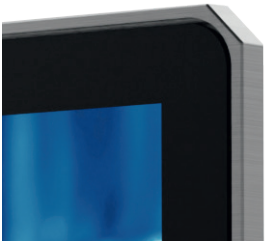
Touch Monitors

Our industrial monitors are equipped with 10-point PCAP touch technology, which can also be operated with gloves. We would be happy to advise you regarding your specific application.

	Panel Size	Resolution	Brightness	Signal Connectors	Power Input	Mounting Type
FSM16-AL	15.6 Inch LCD	1920 × 1080	500 cd/m ²	VGA / DVI-D / DP	2 Pin Terminal Block 15–30V DC	VESA100
FSM16-AL-PM	15.6 Inch LCD	1920 × 1080	500 cd/m ²	VGA / DVI-D / DP	2 Pin Terminal Block 15–30V DC	VESA100 / Panel Mount
FSM16-ALR	15.6 Inch LCD	1920 × 1080	500 cd/m ²	VGA / DVI-D / DP	2 Pin Terminal Block 15–30V DC	VESA100
FSM16-ALR-PM	15.6 Inch LCD	1920 × 1080	500 cd/m ²	VGA / DVI-D / DP	2 Pin Terminal Block 15–30V DC	VESA100 / Panel Mount
FSM18-AL	18.5 Inch LCD	1920 × 1080	350 cd/m ²	VGA / DVI-D / DP	2 Pin Terminal Block 15–30V DC	VESA100
FSM18-AL-PM	18.5 Inch LCD	1920 × 1080	350 cd/m ²	VGA / DVI-D / DP	2 Pin Terminal Block 15–30V DC	VESA100 / Panel Mount
FSM18-ALR	18.5 Inch LCD	1920 × 1080	350 cd/m ²	VGA / DVI-D / DP	2 Pin Terminal Block 15–30V DC	VESA100
FSM18-ALR-PM	18.5 Inch LCD	1920 × 1080	350 cd/m ²	VGA / DVI-D / DP	2 Pin Terminal Block 15–30V DC	VESA100 / Panel Mount
FSM22-AL	21.5 Inch LCD	1920 × 1080	300 cd/m ²	VGA / DVI-D / DP	2 Pin Terminal Block 15–30V DC	VESA100
FSM22-AL-PM	21.5 Inch LCD	1920 × 1080	300 cd/m ²	VGA / DVI-D / DP	2 Pin Terminal Block 15–30V DC	VESA100 / Panel Mount
FSM22-ALR	21.5 Inch LCD	1920 × 1080	300 cd/m ²	VGA / DVI-D / DP	2 Pin Terminal Block 15–30V DC	VESA100
FSM22-ALR-PM	21.5 Inch LCD	1920 × 1080	300 cd/m ²	VGA / DVI-D / DP	2 Pin Terminal Block 15–30V DC	VESA100 / Panel Mount



-PM (Panel Mount)



FSMxx-AL (Angular)



FSMxx-ALR (Round)



HDBaseT Touch Monitors



HDBaseT enables a true single-cable solution for cost-effective monitor connections, supporting cable lengths of up to 100m, including power supply, USB, video, audio and other signals.

	Panel Size	Resolution	Brightness	Signal Connectors	Power Connector	Mounting Type
FSM16-ALH	15.6 Inch LCD	1920 × 1080	500 cd/m ²	HDBaseT RJ45	Power over Ethernet	VESA100
FSM16-ALH-PM	15.6 Inch LCD	1920 × 1080	500 cd/m ²	HDBaseT RJ45	Power over Ethernet	VESA100/ Panel Mount
FSM16-ALRH	15.6 Inch LCD	1920 × 1080	500 cd/m ²	HDBaseT RJ45	Power over Ethernet	VESA100
FSM16-ALRH-PM	15.6 Inch LCD	1920 × 1080	500 cd/m ²	HDBaseT RJ45	Power over Ethernet	VESA100/ Panel Mount
FSM18-ALH	18.5 Inch LCD	1920 × 1080	350 cd/m ²	HDBaseT RJ45	Power over Ethernet	VESA100
FSM18-ALH-PM	18.5 Inch LCD	1920 × 1080	350 cd/m ²	HDBaseT RJ45	Power over Ethernet	VESA100/ Panel Mount
FSM18-ALRH	18.5 Inch LCD	1920 × 1080	350 cd/m ²	HDBaseT RJ45	Power over Ethernet	VESA100
FSM18-ALRH-PM	18.5 Inch LCD	1920 × 1080	350 cd/m ²	HDBaseT RJ45	Power over Ethernet	VESA100/ Panel Mount
FSM22-ALH	21.5 Inch LCD	1920 × 1080	300 cd/m ²	HDBaseT RJ45	Power over Ethernet	VESA100
FSM22-ALH-PM	21.5 Inch LCD	1920 × 1080	300 cd/m ²	HDBaseT RJ45	Power over Ethernet	VESA100/ Panel Mount
FSM22-ALRH	21.5 Inch LCD	1920 × 1080	300 cd/m ²	HDBaseT RJ45	Power over Ethernet	VESA100
FSM22-ALRH-PM	21.5 Inch LCD	1920 × 1080	300 cd/m ²	HDBaseT RJ45	Power over Ethernet	VESA100/ Panel Mount

Customized color anodizing and
antiglare options available on request

We provide custom products with very low MOQ – just
ask for your specific customization



HDBaseT Touch Monitor

Panel PC

All Panel PCs can be extensively configured with RAM, SSD, CPU and other accessories.
Please feel free to send us your requirements.

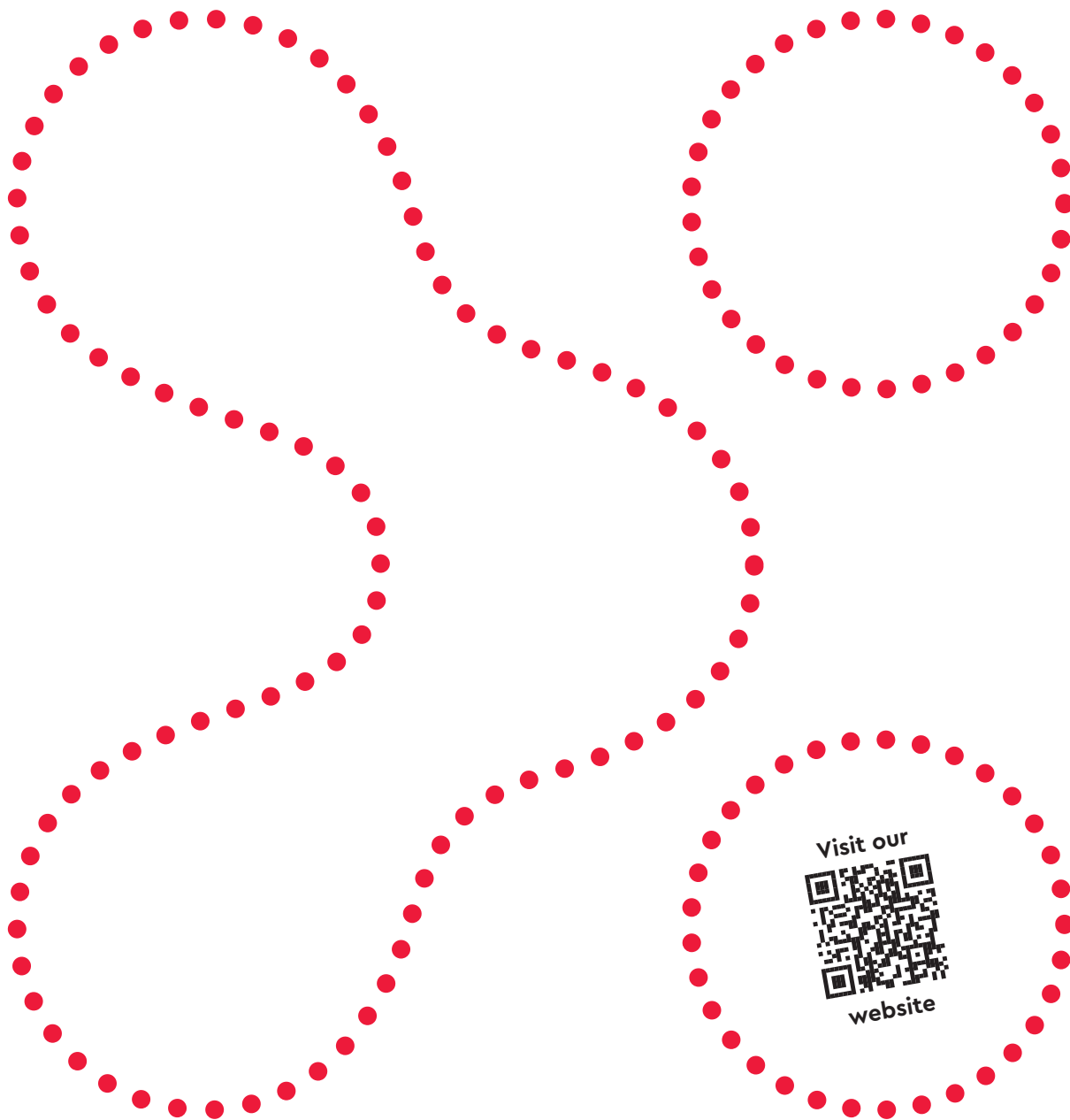
	Panel Size	Resolution	Brightness	CPU	Power Connector	Mounting Type
FSP16-AL	15.6 Inch LCD	1920 × 1080	300 cd/m ²	Atom/i3/i5/i7	4 Pin Terminal Block 12-24V DC	VESA100
FSP16-AL-PM	15.6 Inch LCD	1920 × 1080	300 cd/m ²	Atom/i3/i5/i7	4 Pin Terminal Block 12-24V DC	VESA100 / Panel Mount
FSP16-ALR	15.6 Inch LCD	1920 × 1080	300 cd/m ²	Atom/i3/i5/i7	4 Pin Terminal Block 12-24V DC	VESA100
FSP16-ALR-PM	15.6 Inch LCD	1920 × 1080	300 cd/m ²	Atom/i3/i5/i7	4 Pin Terminal Block 12-24V DC	VESA100 / Panel Mount
FSP18-AL	18.5 Inch LCD	1920 × 1080	300 cd/m ²	Atom/i3/i5/i7	4 Pin Terminal Block 12-24V DC	VESA100
FSP18-AL-PM	18.5 Inch LCD	1920 × 1080	300 cd/m ²	Atom/i3/i5/i7	4 Pin Terminal Block 12-24V DC	VESA100 / Panel Mount
FSP18-ALR	18.5 Inch LCD	1920 × 1080	300 cd/m ²	Atom/i3/i5/i7	4 Pin Terminal Block 12-24V DC	VESA100
FSP18-ALR-PM	18.5 Inch LCD	1920 × 1080	300 cd/m ²	Atom/i3/i5/i7	4 Pin Terminal Block 12-24V DC	VESA100 / Panel Mount
FSP22-AL	21.5 Inch LCD	1920 × 1080	300 cd/m ²	Atom/i3/i5/i7	4 Pin Terminal Block 12-24V DC	VESA100
FSP22-AL-PM	21.5 Inch LCD	1920 × 1080	300 cd/m ²	Atom/i3/i5/i7	4 Pin Terminal Block 12-24V DC	VESA100 / Panel Mount
FSP22-ALR	21.5 Inch LCD	1920 × 1080	300 cd/m ²	Atom/i3/i5/i7	4 Pin Terminal Block 12-24V DC	VESA100
FSP22-ALR-PM	21.5 Inch LCD	1920 × 1080	300 cd/m ²	Atom/i3/i5/i7	4 Pin Terminal Block 12-24V DC	VESA100 / Panel Mount



Industrial Touch Monitor



Industrial Panel PC



Fabrimex Systems AG

Industriestrasse 4B

8604 Volketswil

Tel. +41 (0)44 908 13 60

www.fabrimex-systems.ch

kontakt@fabrimex-systems.ch

