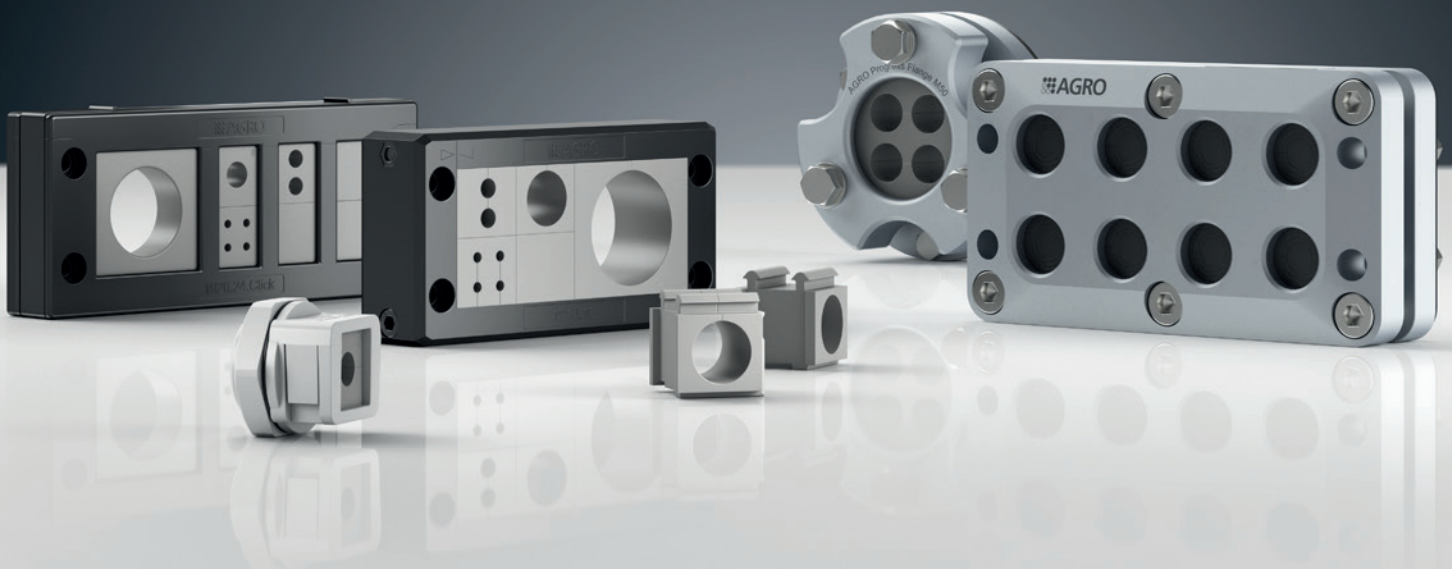


AGRO MULTI-CABLE ENTRY (MCE)

Cable entry units for multiple cables

Innovative cable entry solutions for every application.



AGRO MCE Pro and MCE Syntec®

For over 70 years, AGRO has been developing and manufacturing high-quality cable glands in accordance with EN 62444. This know-how can also be seen in the diverse designs of AGRO's MCE range of multi-cable entries for the feedthrough and strain relief of electrical, pneumatic and hydraulic lines. Wherever reliable connections are required for machines or equipment, our multi-cable entries find application.

They are widely used, for example, for the feedthrough of cables – with or without connectors – into conventional switchboards or electrical systems. But AGRO also offers robust and reliable solutions with protection ratings of up to IP68 and IP69K for very demanding applications, such as railway transport and the like, that involve water, dust, vibrations and high temperatures.

Whether multi-feedthroughs with metal or plastic frames, splittable cable glands or sheet membranes, we have the right product for you – if required, tailored to your specification.



AGRO MCE Pro

Multi-cable entries – 1908 series

- Screwed-together aluminium frames
- Also available with EMC designs
- Very high sealing performance – up to IP68 / IP69K
- High pull-out forces according to EN 62444
- Anodised aluminium – extremely robust and adaptable to suit different needs



AGRO Progress® flange

Multi-cable feedthroughs – 1988 series

- Easy installation, screwed from the front
- Quick installation with ratchet or cordless screwdriver
- Customer-specific sealing elements
- Absolute process reliability, with tightening „to the stop“
- Anodised aluminium – extremely robust and adaptable to suit different needs



AGRO MCE Rail

Customer-specific adapter plates

- Suitable for all Progress® cable or conduit glands
- Used e.g. for roof and floor penetrations in vehicle manufacturing
- Meets the highest fire protection requirements according to EN 45545-2 (HL3), EN 45545-3 (E30) and NFPA, for example
- Dimensions and fittings according to customer specifications

AGRO MCE Syntec® - AGRO's new line of multi-cable entries

Our latest product line includes a wide range of components that make it much easier to perform cable feedthroughs, even with pre-assembled connectors. Standardised feedthrough solutions are available at competitive prices, offering better reference values than competitor products in terms of sealing performance and strain relief.

The benefits to you:

- Extensive range of dimensionally standardised series
- Multi-section grommets, compatible with different series of frames, reduce inventory
- Wide range of accessories such as dust protection covers, snap-in frames, sealing plugs, grommets with threaded inserts or integrated pressure balance elements, etc.

Technical advantages:

- Double membranes enhance the system's sealing performance
- UL94V-0 plastics improve fire resistance
- IK10 impact testing for robustness under extreme operating conditions
- Simple and time-saving installation

Multi-cable entries – 1910 series

- Screwed plastic frames
- Special designs, e.g. with 90°-angle, with hygienic design or with multiple "windows"
- Protection class: IP 66

Multi-cable entries – 1920 series

- Top-opening plastic frames with click-in-place design
- Protection class: IP 54

Multi-cable entries – 1930 series

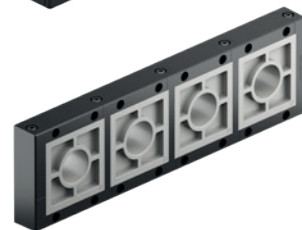
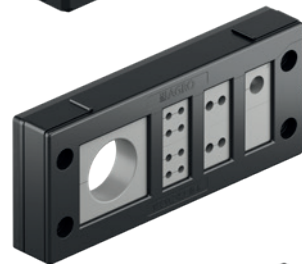
- Designed for large cables or corrugated pipes with Ø 36-65 mm
- Screwed plastic frames
- Combination of 1 to 4 "windows"
- Protection class: IP 54

Splittable cable glands – 1917 & 1925 series

- Screwed or snap-in-place installation
- Protection class: IP 54 to IP 66
- Available with straight or angled housings
- Can be combined with grommets of the 1910 and 1920 series

Cable feedthrough plates – 1940 series

- For the feedthrough of cables without connectors
- With or without integrated reinforcement frame
- Protection class: IP 65 to IP 68
- Also available with a round design and with metric connection threads



Systems and solutions for professional cable entries.



Progress® EMC.

EMC cable glands. Wide product range for trouble-free installation.



Cable glands.

Progress® und Syntec® cable glands.
The best for cables.



Cable protection conduits.

Products for applications in the manufacturing of machines, plant, vehicles and rolling stock and in the automation and energy technology sectors.

Technical information and advice

Further information about our products, system solutions and communication media may be found on our website at **www.agro.ch**.

Our team of technical advisors will be happy to answer any questions you may have or provide further information, and looks forward to speaking with you: **+41 (0)62 889 47 47**

