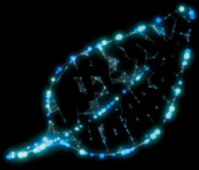


Rittal – The System.

Faster – better – everywhere.



Sustainability that works

Minimising CO₂ emissions – the Blue e+ way



ENCLOSURES

POWER DISTRIBUTION

CLIMATE CONTROL

IT INFRASTRUCTURE

SOFTWARE & SERVICES



FRIEDHELM LOH GROUP

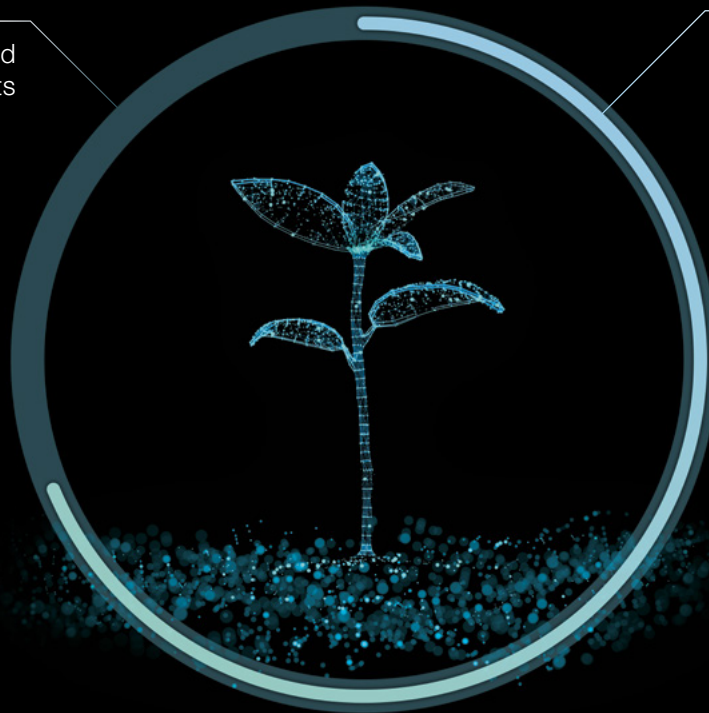
Sustainability is our priority. Yours too?

Sustainable use
of resources

Speed-controlled
protects components

Annual carbon savings
per unit equate to the

CO₂-absorption
of 80 trees



75%

energy savings

on average with each
Blue e+ unit

**Using green steel reduces
CO₂ emissions during
manufacturing.**

Alongside digitalisation, sustainability is high on the global agenda. Companies need to find solutions that really work, in order to reconcile political requirements and objectives with rising electricity prices as well as our growing energy needs.

Increasingly, customers are making purchase decision based on a company's sustainability credentials.

Now is the time to take action. We're ready. Are you?

Sustainability that works.

Blue e+ technology

In 2015, Rittal launched the world's most efficient range of enclosure cooling units: Blue e+. Since then, it has been continuously refined and upgraded. Average energy savings compared with conventional cooling units are in the region of 75%, which translates into a significantly reduced carbon footprint.

What's more, Blue e+ boasts one-of-a-kind technology, an extended service life for installed components thanks to reduced temperature fluctuations, as well as global usability and integration into the IoT. Its revolutionary energy efficiency is achieved with ingenious hybrid technology, featuring two parallel cooling circuits that can operate independently or in tandem, depending on the temperature difference.

The uniqueness of the Blue e+ technology uses the symbiotic power of passive and active cooling circuits. Two circuits operating in perfect harmony and adapting to the ambient conditions for maximum efficiency.

**Further information
can be found at:**

www.rittal.com/CO2Footprint

Passive cooling circuit:
The heat pipe dissipates heat from the enclosure as soon as the ambient temperature drops below the setpoint



Active cooling circuit:
Speed-controlled components for demand-based cooling

Your benefits:



- Greater efficiency: Average energy savings of 75% per Blue e+ unit
- More flexibility: For any application, location or output range
- Enhanced reliability: Maximum reliability, less maintenance-intensive and ready to use at short notice
- Added simplicity: Effortless planning, operation and installation

New: Blue e+ S: Sustainability for outputs of up to 1,000 W



The new Blue e+ S cooling units: Now even more sustainable power for output categories from 300 – 1,000 W. In a brand new design with smart functions and even faster processes, thanks to the Smart Service concept.



Now more sustainable, thanks to a world-beating energy efficiency rating and minimal Global Warming Potential



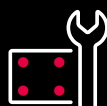
Now even better, with digital connection via smart monitoring, IoT interface and our Scan & Service app



Now more versatile, with multi-voltage capability for global use



Now more convenient, with fast, easy maintenance and servicing access



Now faster, with optimised handling and easier assembly



Now more reliable, because changes to the system status are indicated by LED optical fibres


**Further information
can be found at:**

www.rittal.com/blue_e_plus_s

Blue e+: Sustainable technology for all applications

A cooling unit that's at home in any environment. Blue e+ units are ideal for all industries and environments. Choose from a range of efficient solutions covering all requirements and applications:

- A wide output range covering all cooling requirements from 0.3 – 5.8 kW
- Sheet steel version for all typical industry applications
- Stainless steel & chemical versions for challenging ambient conditions
- Robust outdoor version with anti-vandalism features
- Maritime versions for applications that can move e.g. on board ships
- International approvals and multi-voltage capability for worldwide use

1t  **CO₂**
savings
per unit/year –
the amount of **CO₂**
absorbed by a beech
tree in **80 years**



Services and digital tools for greater efficiency

Further information can be found at:

www.rittal.com/Efficiency-analyses

Rittal's efficiency and service check can speed up your path to carbon-neutral production!

Rittal can help you convert your production to cooling units based on Blue e+ technology. Get a bespoke efficiency and service audit of your installed enclosure cooling units.



Efficiency and service check:

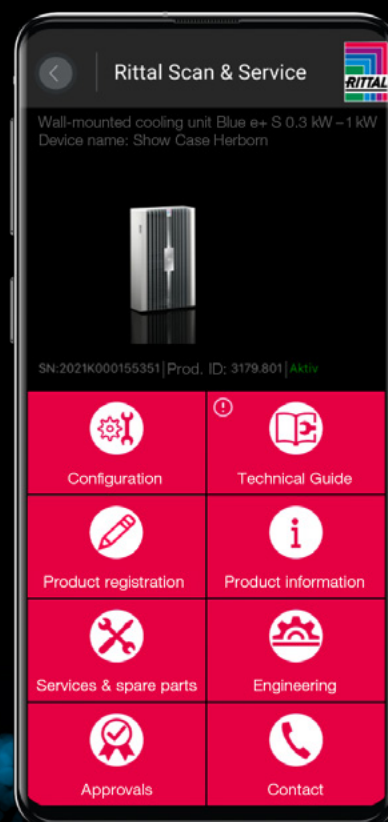


- Review of the current performance levels of your units
- Energy-saving ideas for energy audits to DIN EN 16247-1
- Recommendations for reducing unscheduled production stoppages, down-time and the associated costs
- Advice on government subsidies and potential tax savings
- Identification of potential savings, improvements and upgrades

Digital tools and data: Rittal Scan & Service app

Direct access to all cooling unit information, simple operation of the equipment and efficient communication in the event of any faults.

Available from the App Store and Google Play



Model No.	Total cooling output L35 L35	Rated voltage, 50/60 Hz	Dimensions [mm]			Installation type		
			Width	Height	Depth	External mounting	Partial internal mounting	Full internal mounting
Blue e+ S, sheet steel*								
3178.800	300 W	110 - 240 V, 1~	300	570	159	■		■
3178.801	300 W	110 - 240 V, 1~	300	570	159	■		■
3179.800	520 W	110 - 240 V, 1~	300	570	199	■		■
3179.801	520 W	110 - 240 V, 1~	300	570	199	■		■
3180.800	780 W	110 - 240 V, 1~	300	570	250	■		■
3184.800	1,000 W	110 - 240 V, 1~	400	950	196	■		■
3184.840	1,000 W	380 - 480 V, 2~	400	950	196	■		■
Blue e+, sheet steel*								
3185.830	1,600 W	110 - 240 V, 1~ 380 - 480 V, 3~	400	950	310	■	■	■
3186.930	2,000 W	110 - 240 V, 1~ 380 - 480 V, 3~	450	1600	294	■	■	■
3187.930	2,600 W	110 - 240 V, 1~ 380 - 480 V, 3~	450	1600	294	■	■	■
3188.940	4,200 W	380 - 480 V, 3~	450	1600	393	■	■	
3189.940	5,800 W	380 - 480 V, 3~	450	1600	393	■	■	
Blue e+ for maritime and other dynamic applications*								
3184.837	1,000 W	110 - 240 V, 1~ 380 - 480 V, 3~	400	950	310	■		■
3185.837	1,600 W	110 - 240 V, 1~ 380 - 480 V, 3~	400	950	310	■		■
3186.937	2,000 W	110 - 240 V, 1~ 380 - 480 V, 3~	450	1600	294	■		■
3187.937	2,600 W	110 - 240 V, 1~ 380 - 480 V, 3~	450	1600	294	■		■
Blue e+, stainless steel*								
3185.530	1,600 W	110 - 240 V, 1~ 380 - 480 V, 3~	400	950	310	■	■	■
3186.630	2,000 W	110 - 240 V, 1~ 380 - 480 V, 3~	450	1600	294	■	■	■
3187.630	2,600 W	110 - 240 V, 1~ 380 - 480 V, 3~	450	1600	294	■	■	■
3188.640	4,200 W	380 - 480 V, 3~	450	1600	393	■	■	
3189.640	5,800 W	380 - 480 V, 3~	450	1600	393	■	■	
Blue e+, chemical*								
3185.835	1,600 W	110 - 240 V, 1~ 380 - 480 V, 3~	400	950	310	■	■	■
3186.935	2,000 W	110 - 240 V, 1~ 380 - 480 V, 3~	450	1600	294	■	■	■
3187.935	2,600 W	110 - 240 V, 1~ 380 - 480 V, 3~	450	1600	294	■	■	■
3188.945	4,200 W	380 - 480 V, 3~	450	1600	393	■	■	
3189.945	5,800 W	380 - 480 V, 3~	450	1600	393	■	■	
Blue e+ outdoor**								
3185.330	1,500 W	110 - 240 V, 1~ 380 - 480 V, 3~	467	1042	280	■	■	■
3186.330	2,000 W	110 - 240 V, 1~ 380 - 480 V, 3~	517	1692	260	■	■	■
3187.330	2,500 W	110 - 240 V, 1~ 380 - 480 V, 3~	517	1692	260	■	■	■
3188.340	3,800 W	380 - 480 V, 3~	517	1692	360	■	■	■
3189.340	5,000 W	380 - 480 V, 3~	517	1692	360	■	■	■
Blue e+, roof-mounted***								
3185.730	1,300 W	110 - 240 V, 1~ 380 - 480 V, 3~	700	308	560	■		

* Operating temperature range: -20 °C - +60 °C | IP protection category and UL Type: IP55, UL Type 12 and 3R | Integrated condensate evaporation except for 3178.801 and 3179.801

** Operating temperature range: -30 °C - +60 °C | IP protection category and UL Type: IP56, UL Type 12, 3R and 4 | Integrated condensate evaporation

*** Operating temperature range: -20 °C - +60 °C | IP protection category and UL Type: IP54, UL Type 12 | Condensate evaporation optionally available as an accessory

Technical specifications: www.rittal.com/wallmounting | Design software: www.rittal.com/therm | Enclosure configuration: www.rittal.com/configurators

Rittal – The System.

Faster – better – everywhere.

- Enclosures
- Power Distribution
- Climate Control
- IT Infrastructure
- Software & Services

You can find the contact details of all Rittal companies throughout the world here.



www.rittal.com/contact

X1WW00246EN2305

ENCLOSURES

POWER DISTRIBUTION

CLIMATE CONTROL

IT INFRASTRUCTURE

SOFTWARE & SERVICES



FRIEDHELM LOH GROUP